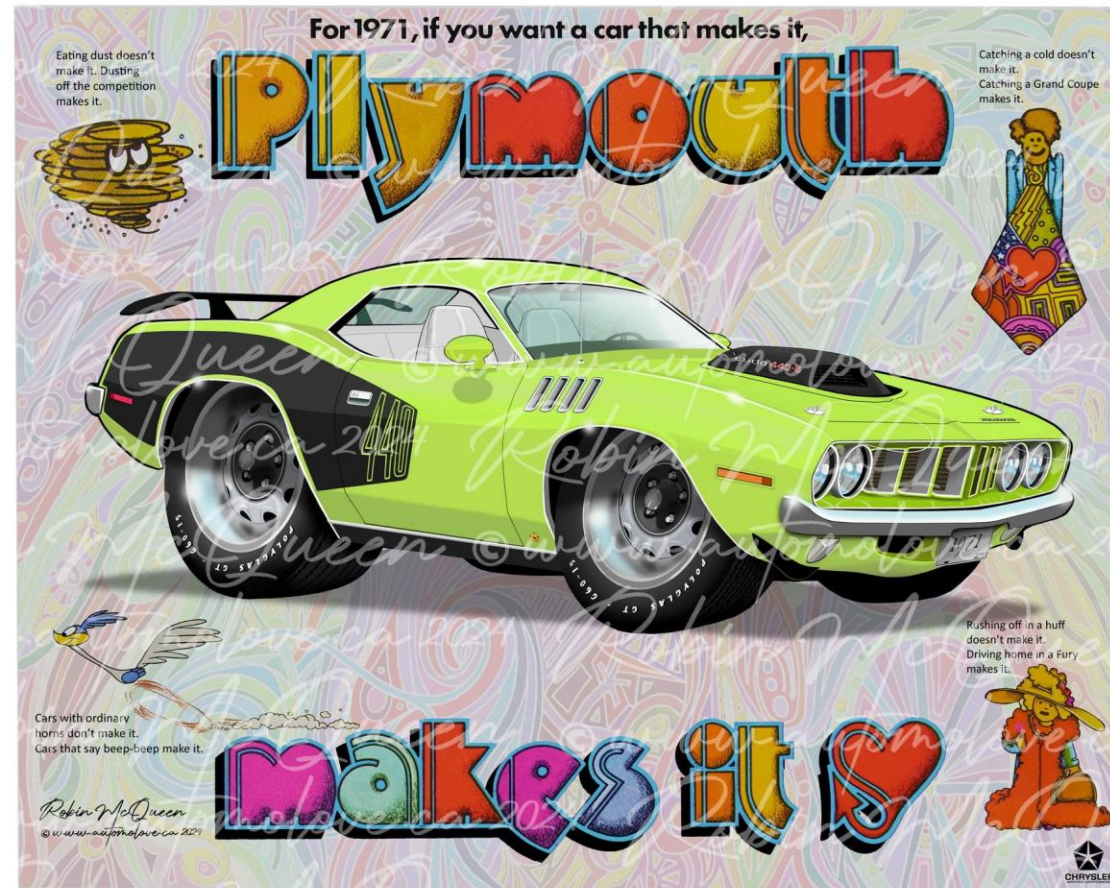


# 1971 PLYMOUTH CUDA 440-6 BARREL



# ONLY 129 CARS EVER MADE THIS IS A FACTORY 1 OF 1 CAR BUILD





# DIS-ASEMBLING OF THE 71 FISH

By Historic Motors AG, CH-8180 Bülach, Switzerland













# SHEET METAL WORK

By Marcel Vettor Carrosseriebau, CH-8836 Bennau, Switzerland





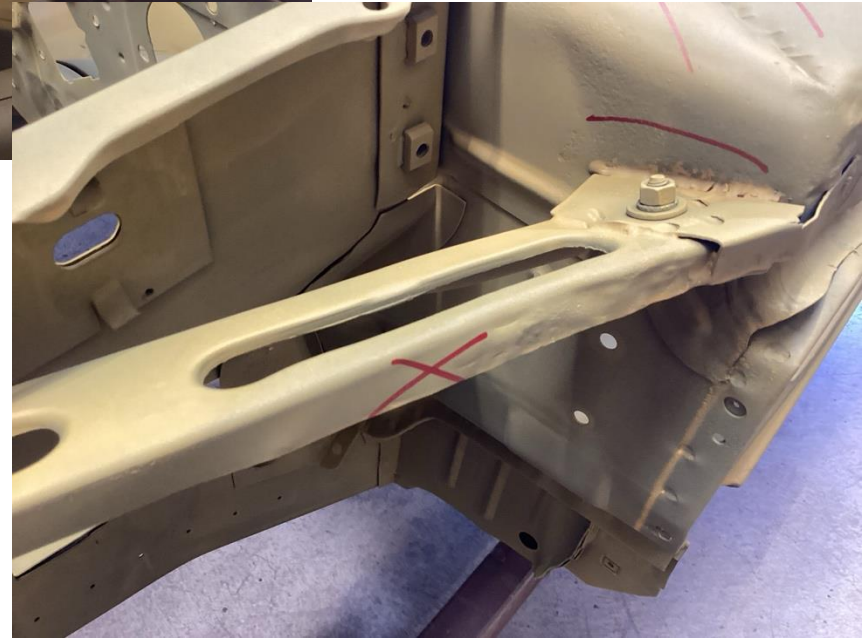


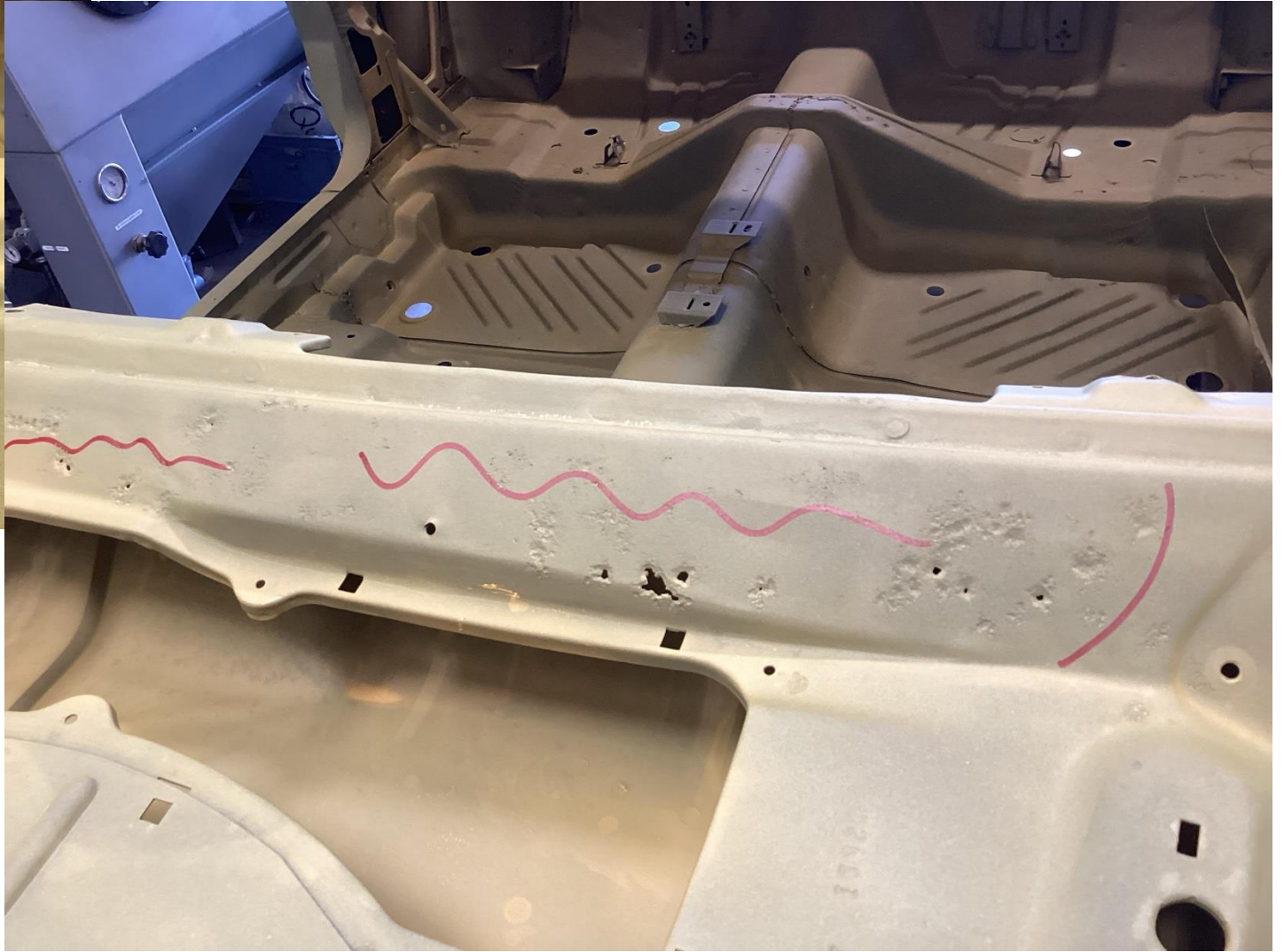
# EVIDENCE OF THE PAST WRONG PAINTED COLOR

- TRACES OF THE WRONG COLOR “MOULIN ROUGE”
- THIS COLOR WAS NOT AVAILABLE FOR THE 71 CUDA FROM FACTORY
- ALSO CAN BE SEEN TRACES OF THE ORIGINAL FACTORY COLOR GY3





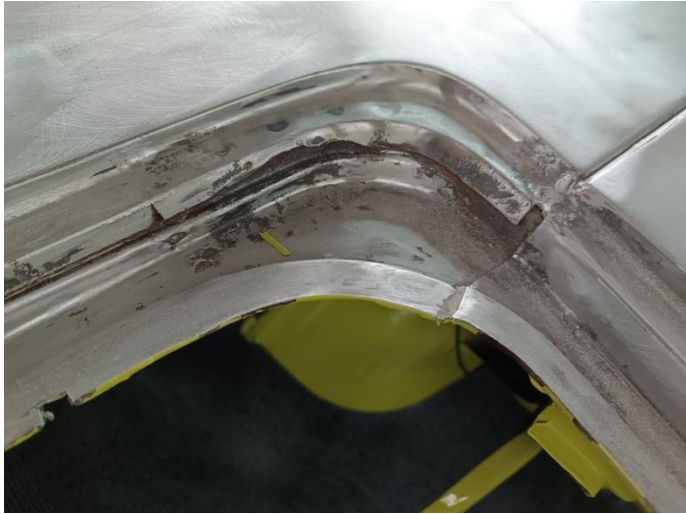


















# ACID DIPPING & RUST TREATMENT

By Meier Oberflächen AG, CH-8197 Rafz, Switzerland





**ACID Dipping and Rust Treatment. The bare sheet metal looks great and can now be prepared for painting.**





# OLD PAINT

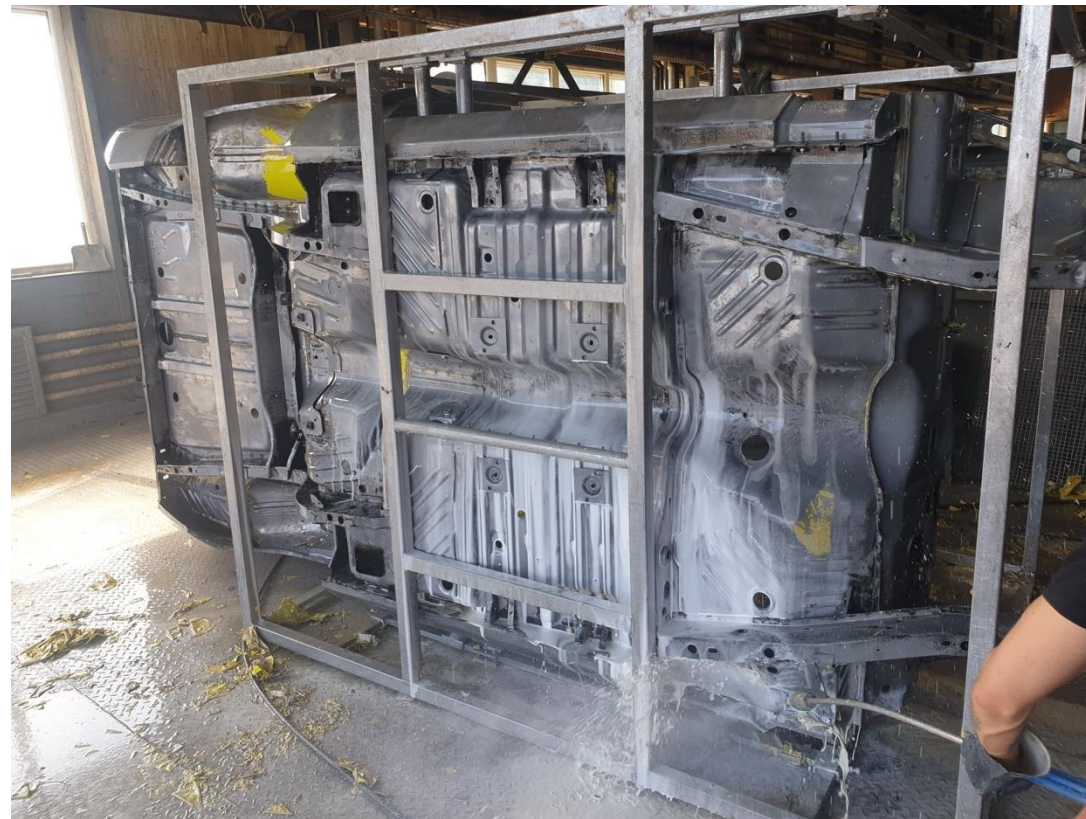




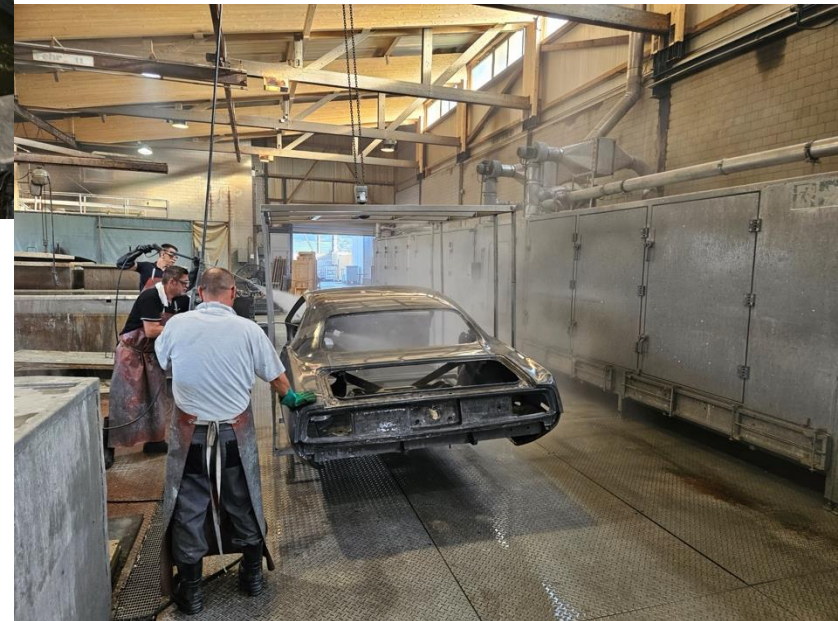




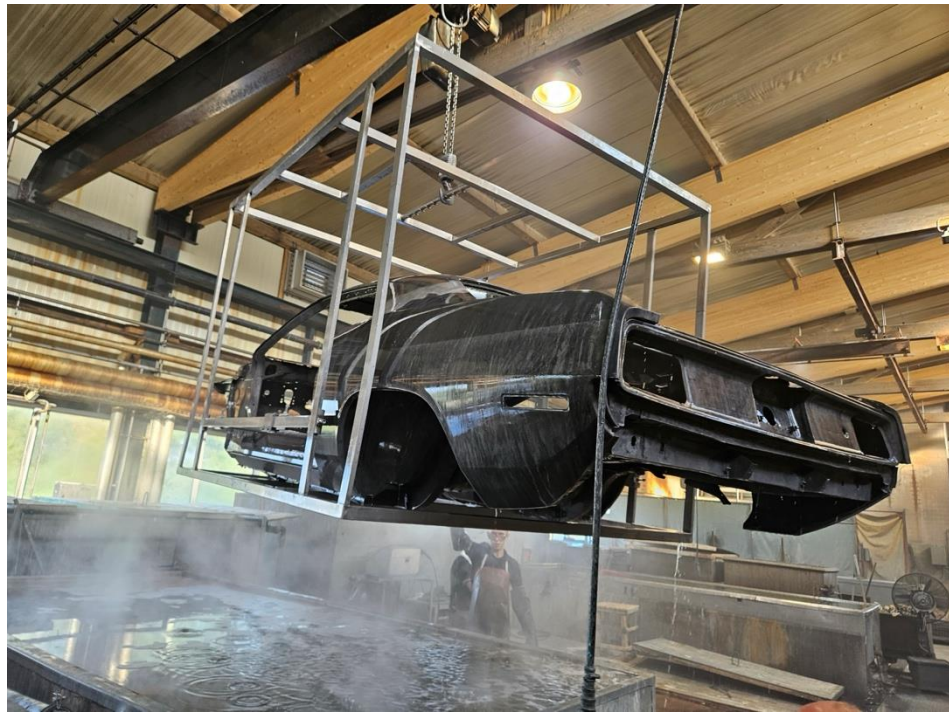
# Impressions of the dipping process



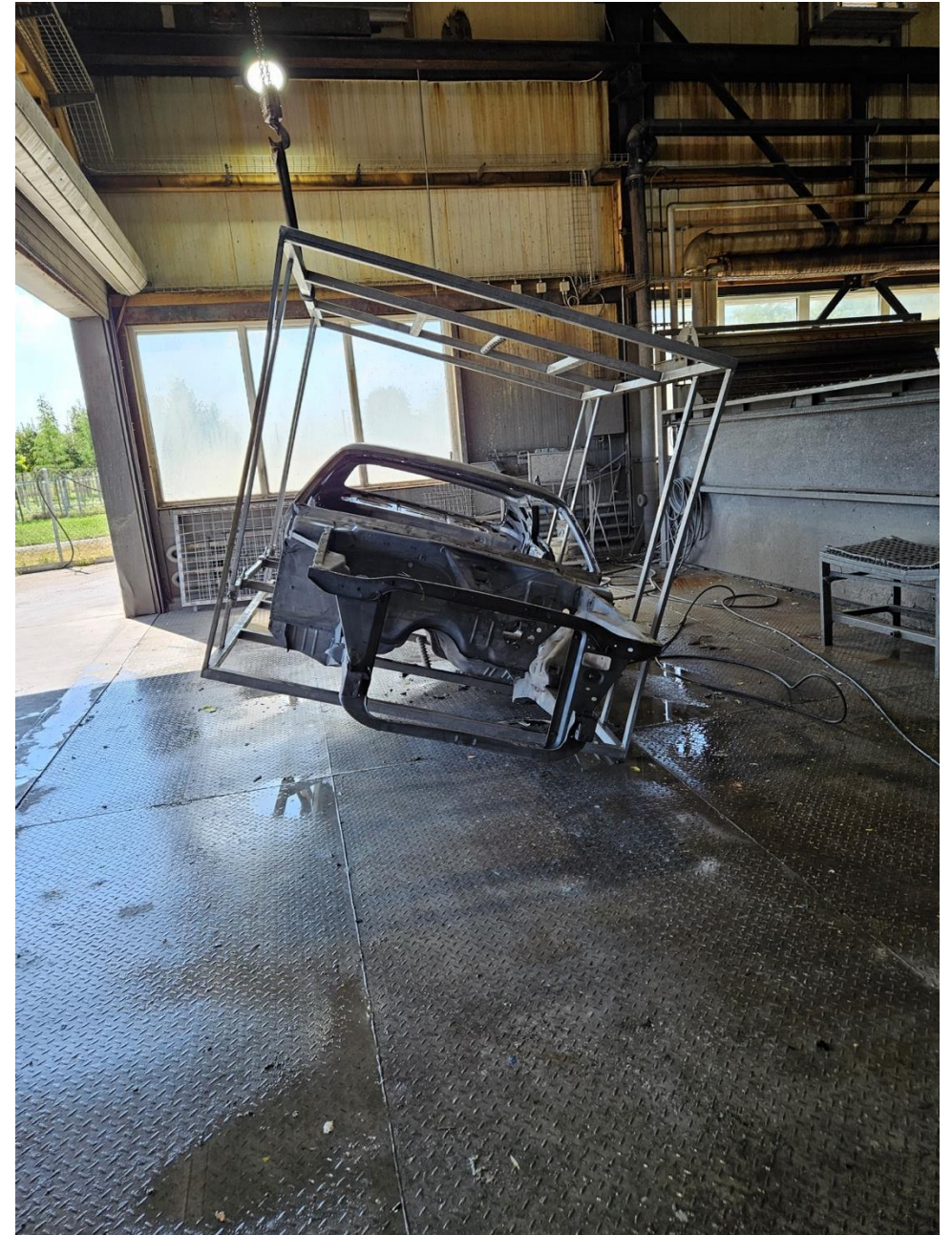




















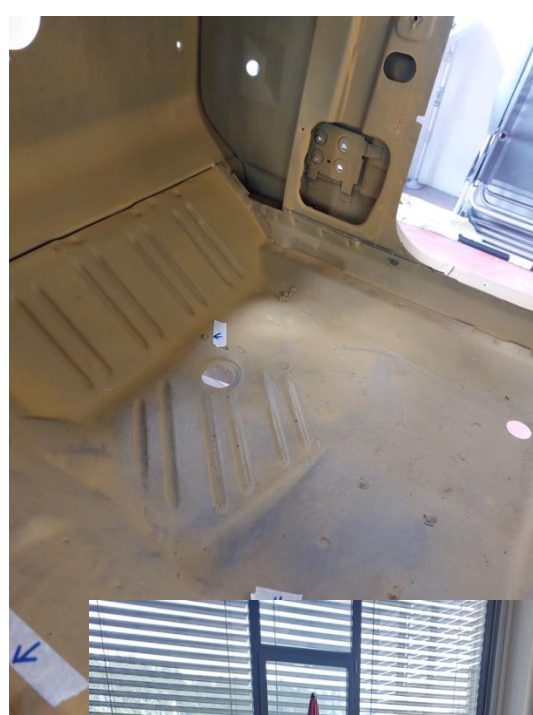


# PAINT JOB OVER 400 HOURS OF HARD WORK

By Lackierprofi GmbH, CH-5630 Muri, Switzerland







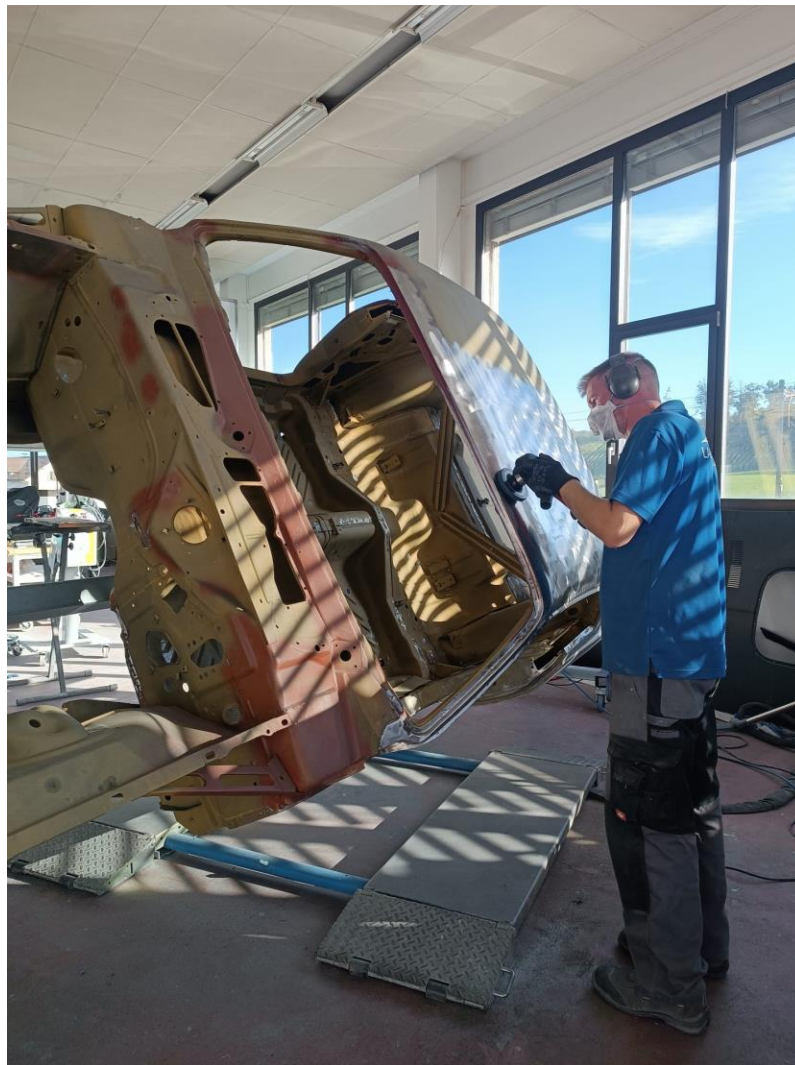




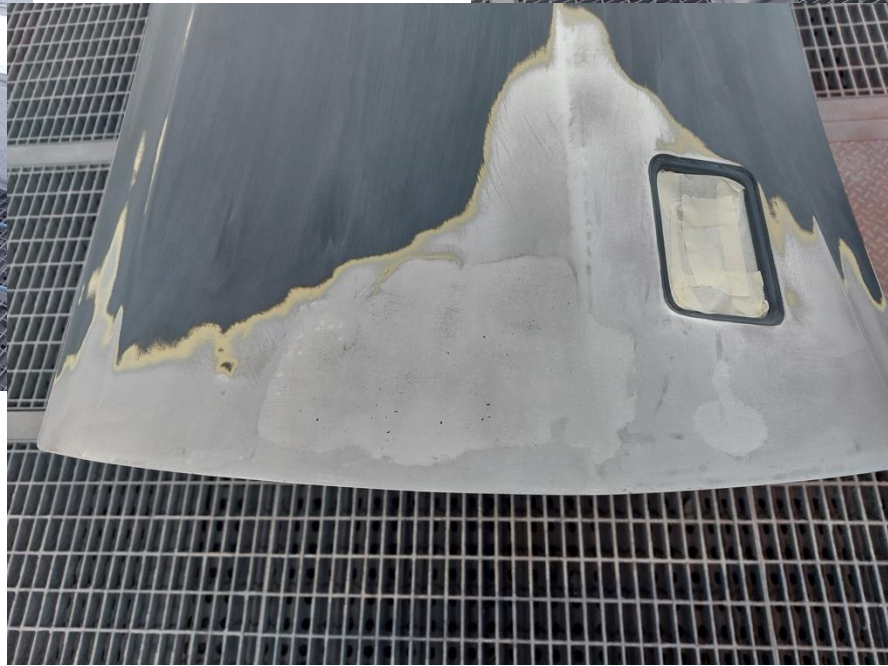
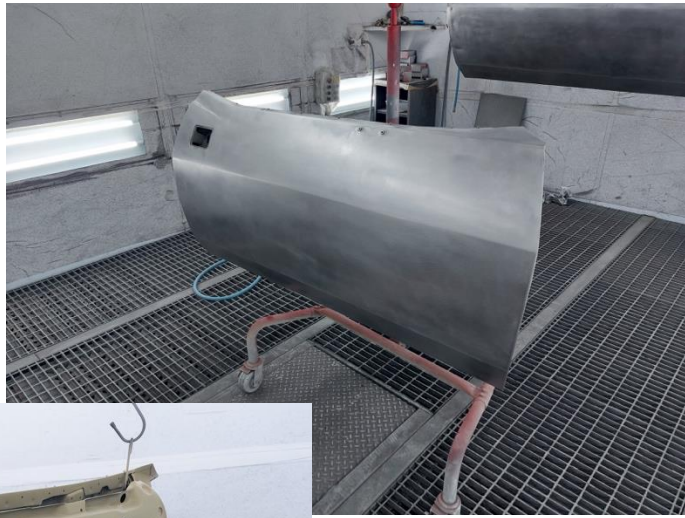




















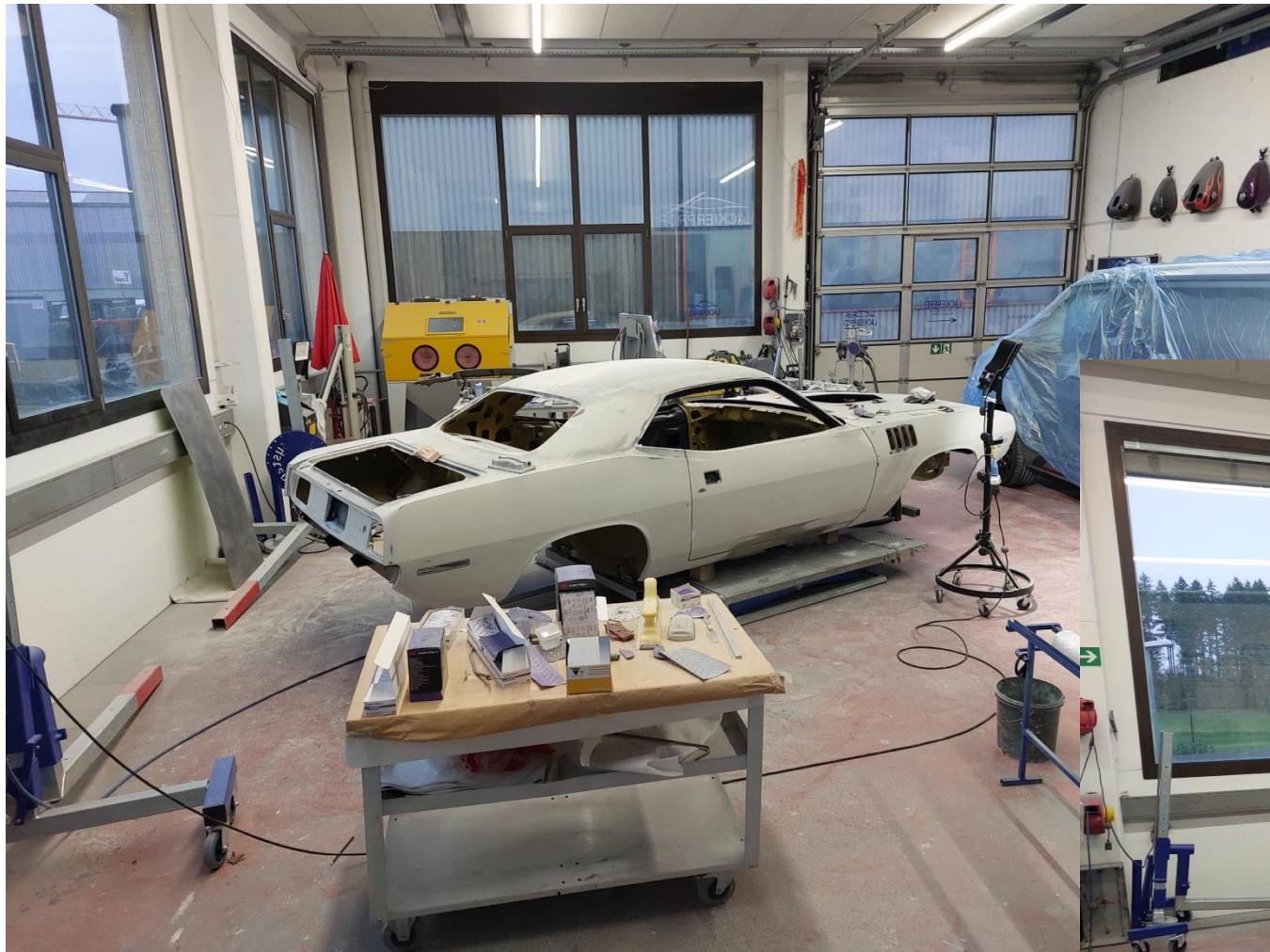












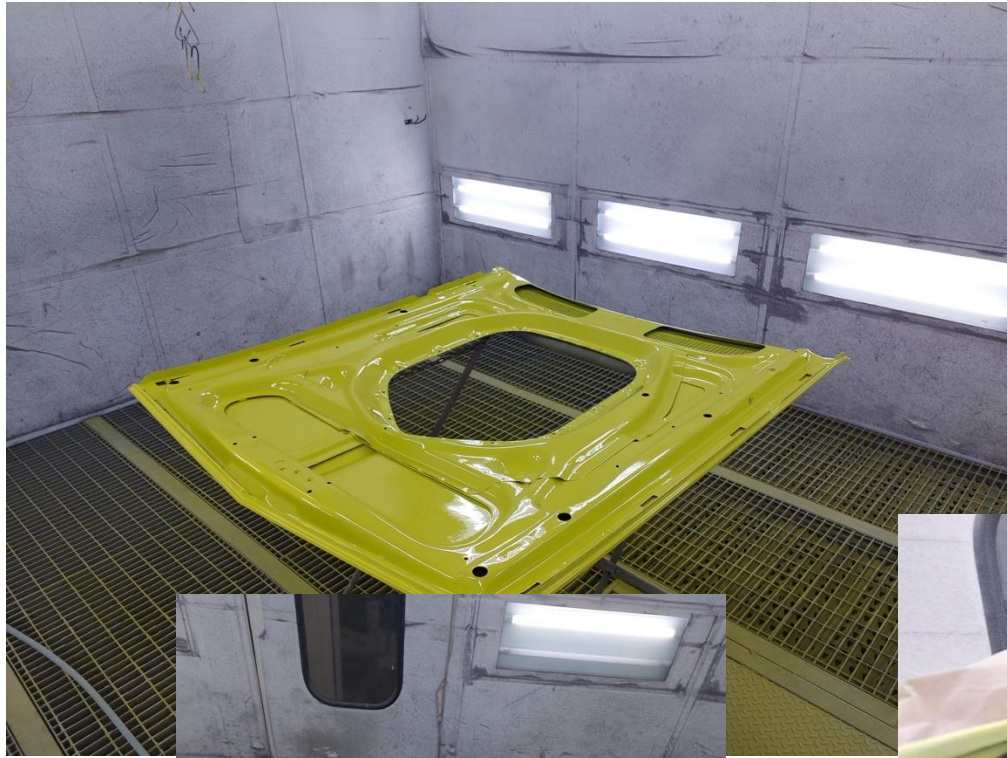








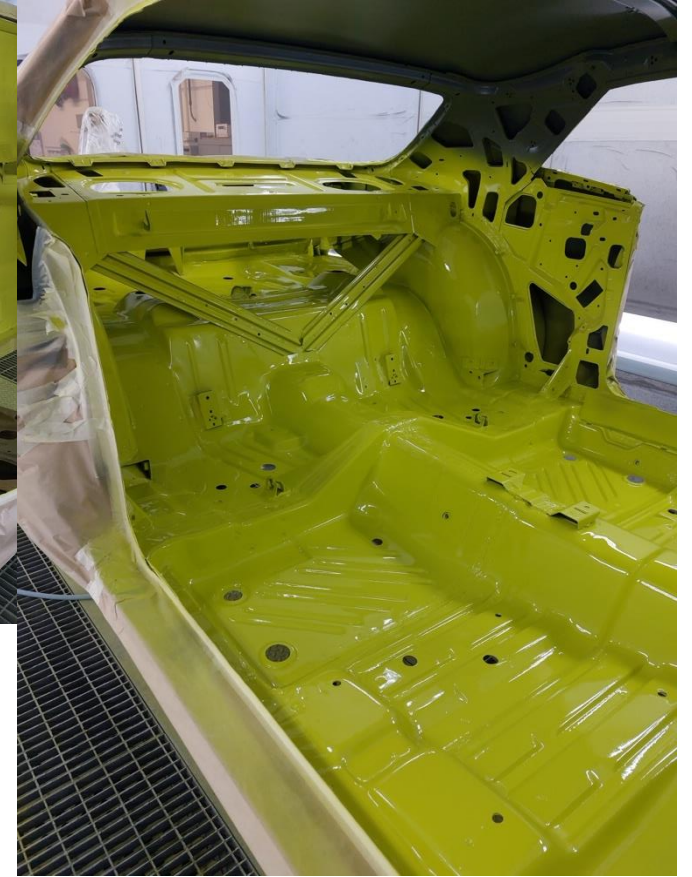
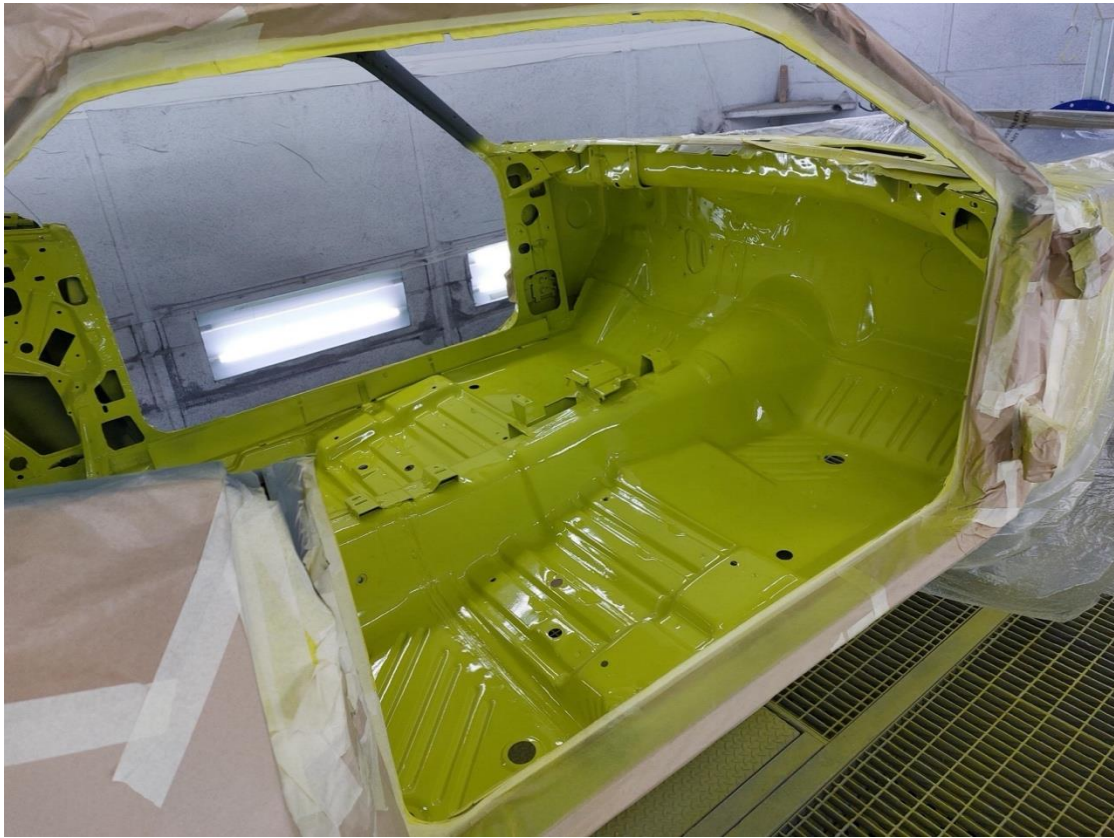




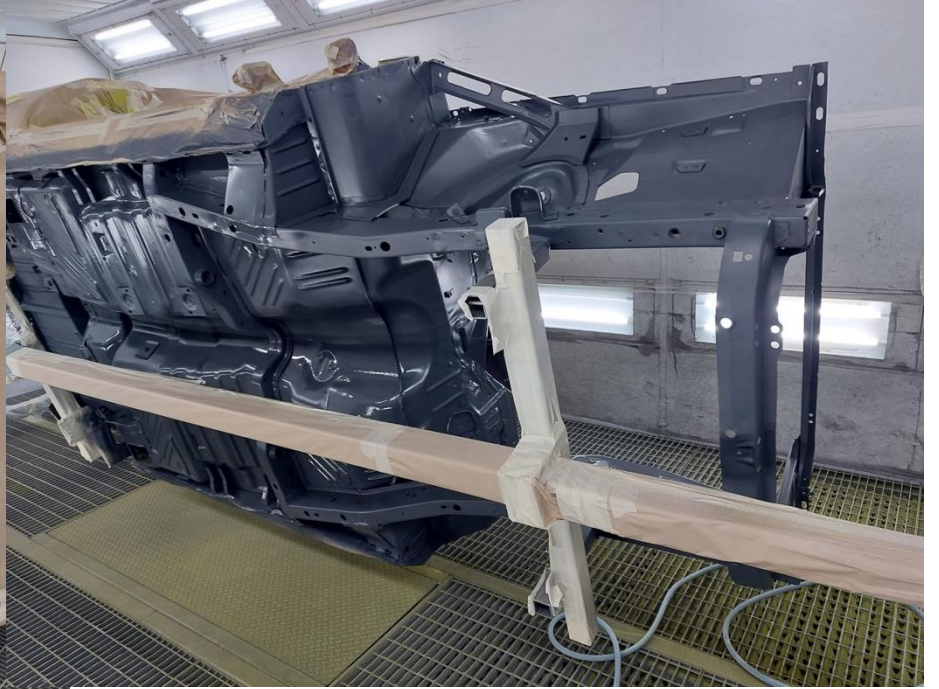












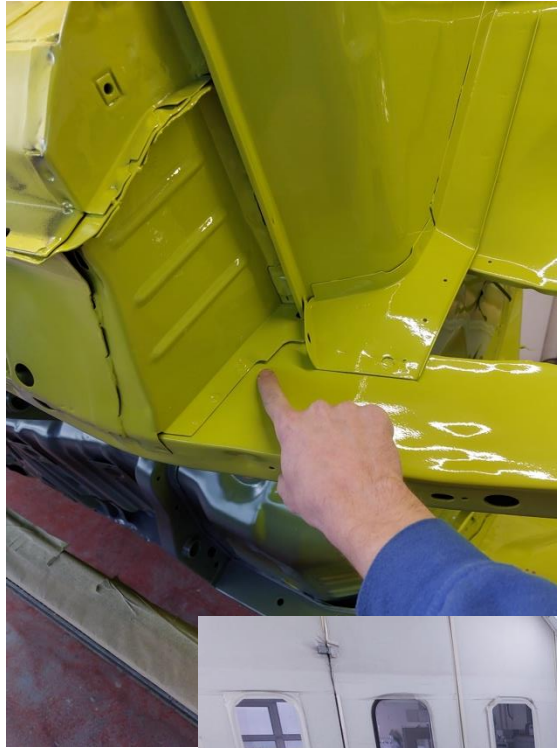






























# INTERIOR WORK

By KRESS AUTO-SATTLER GMBH, CH-8114 DÄNIKON, SWITZERLAND



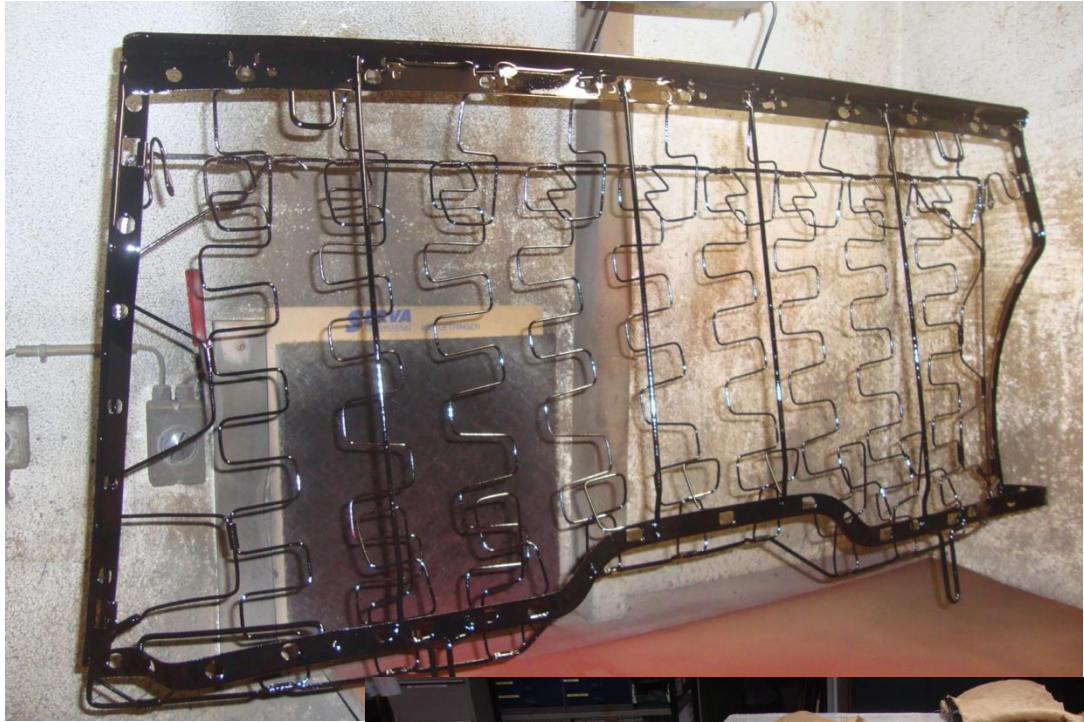








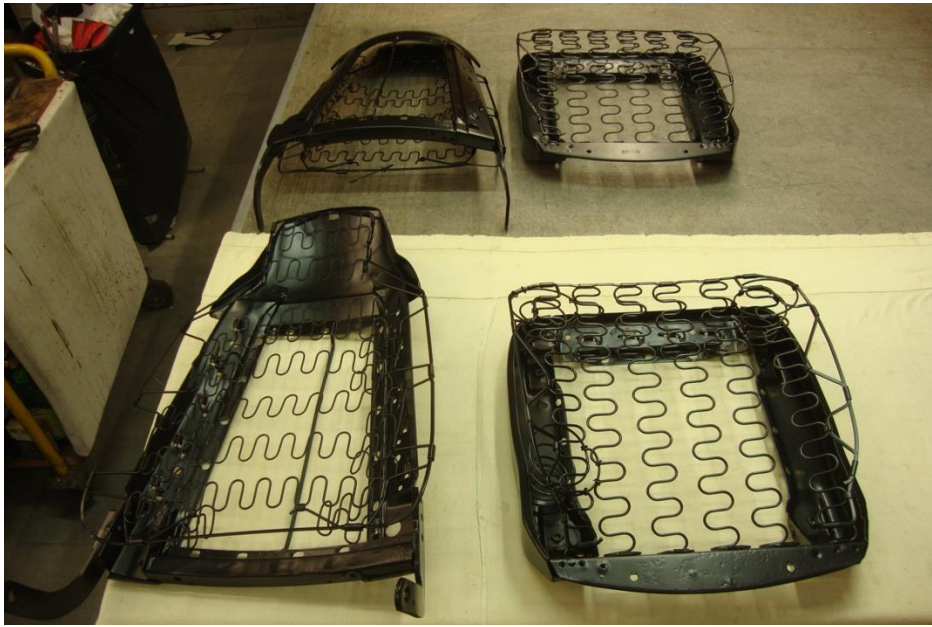
















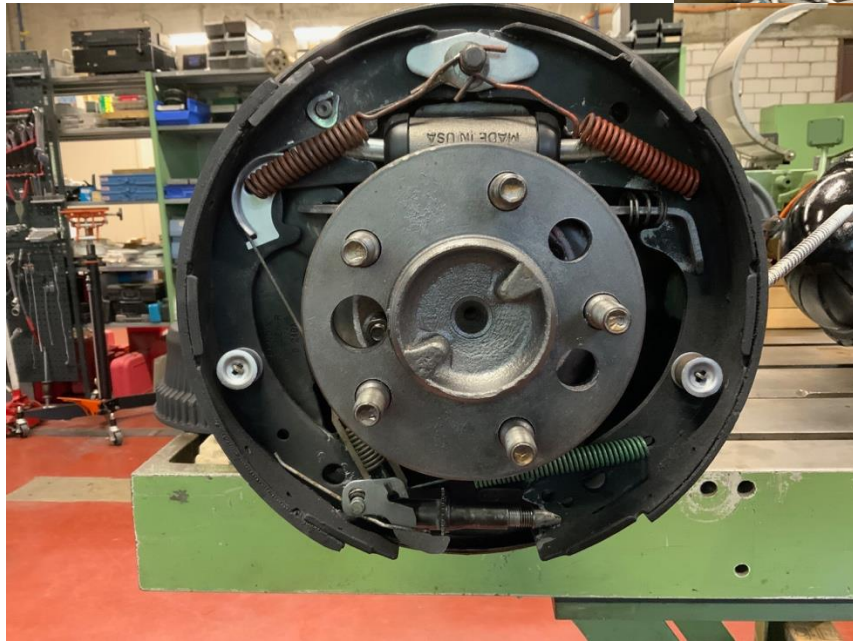


# ASEMBLING OF THE 1971 PLYMOUTH CUDA

By Historic Motors AG, CH-8180 Bülach, Switzerland







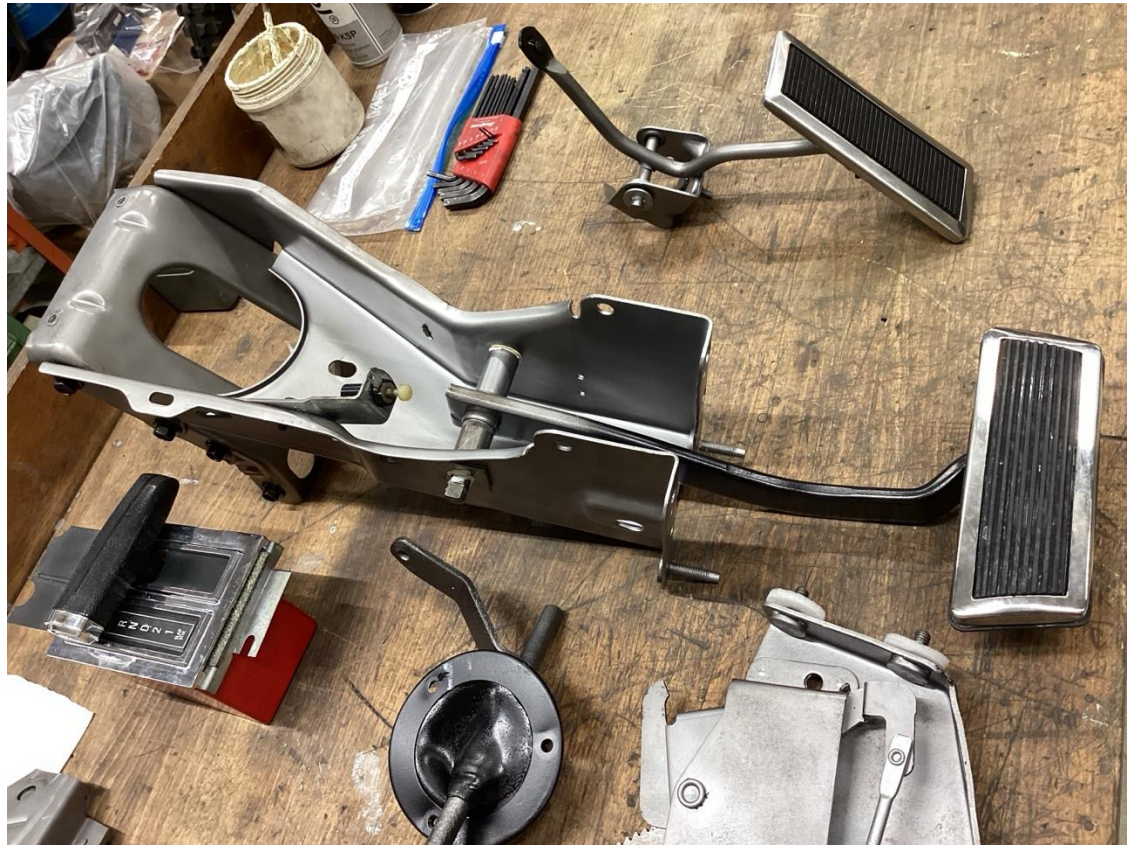




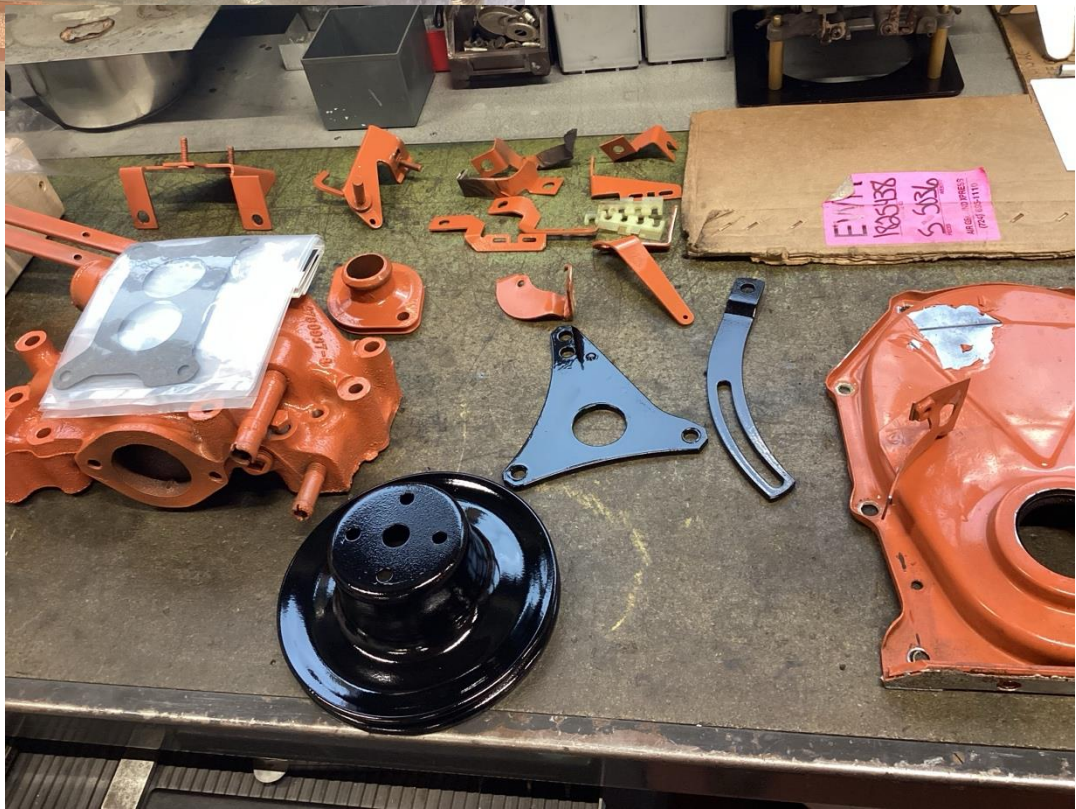
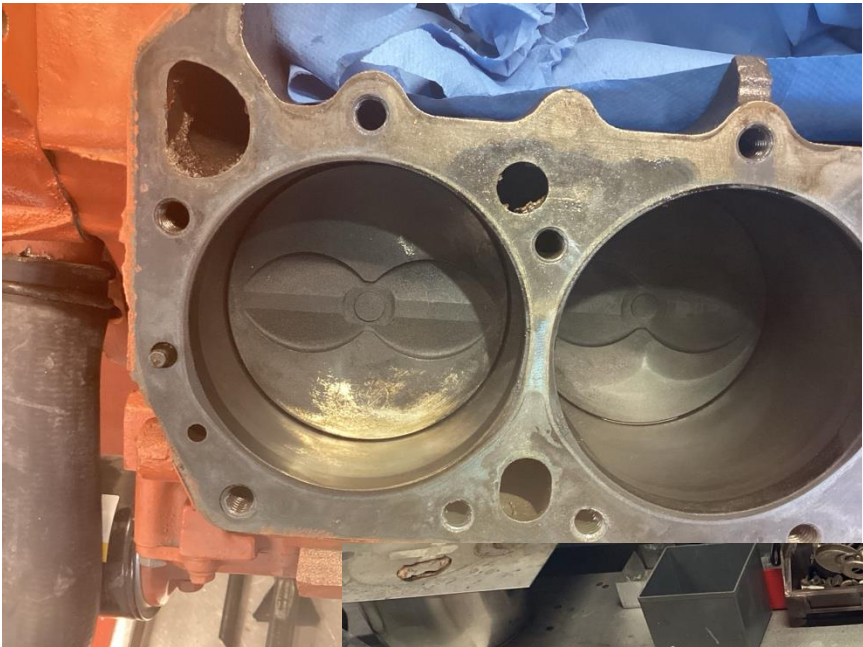








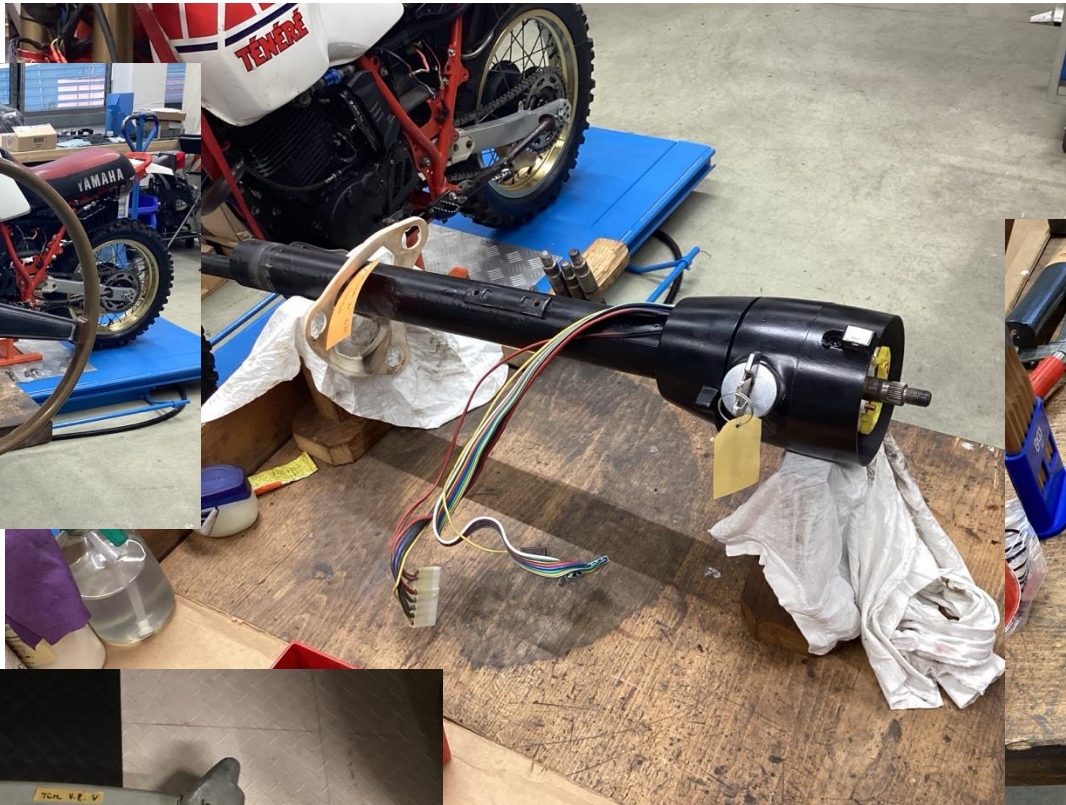




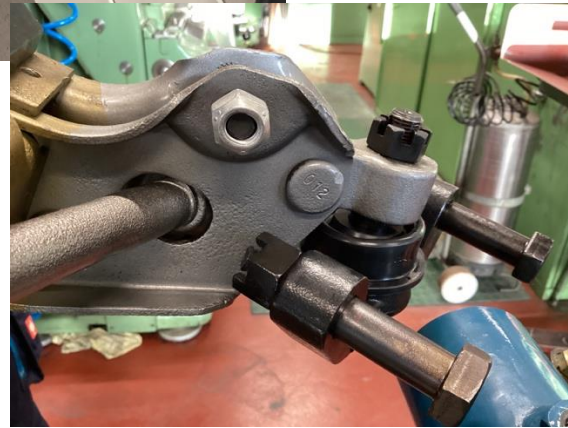




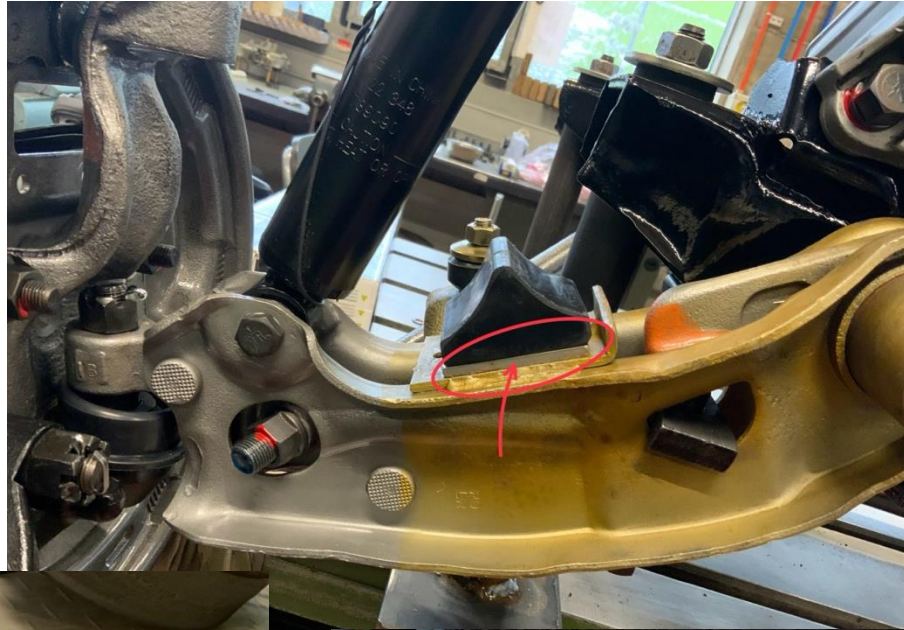




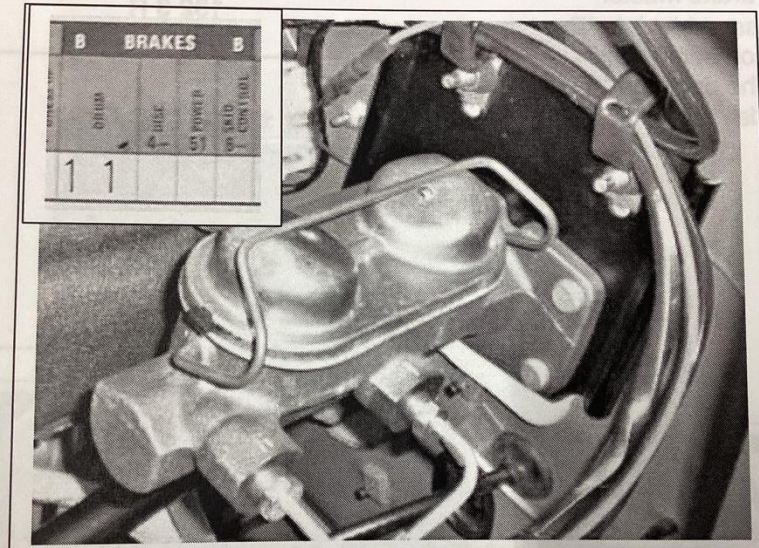












Original 1971 master cylinder # 3461189 with 1.03" bore dia. for drum brakes

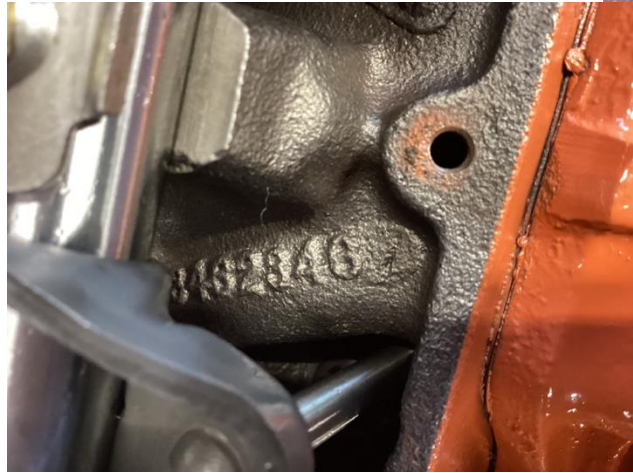
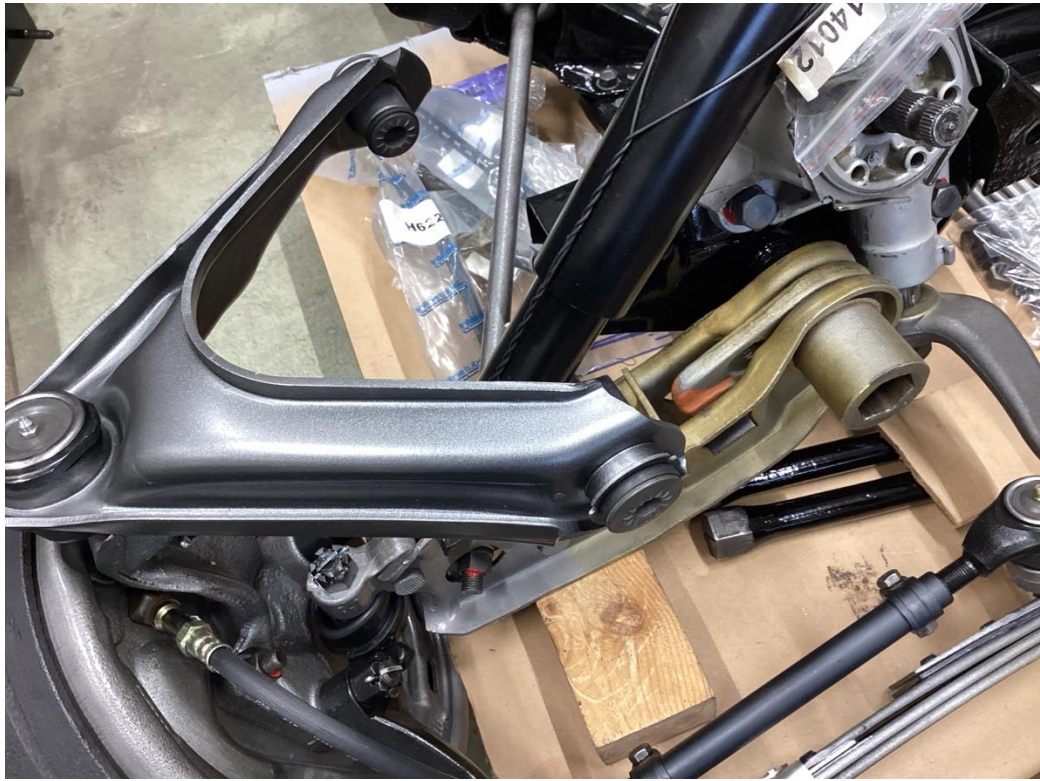








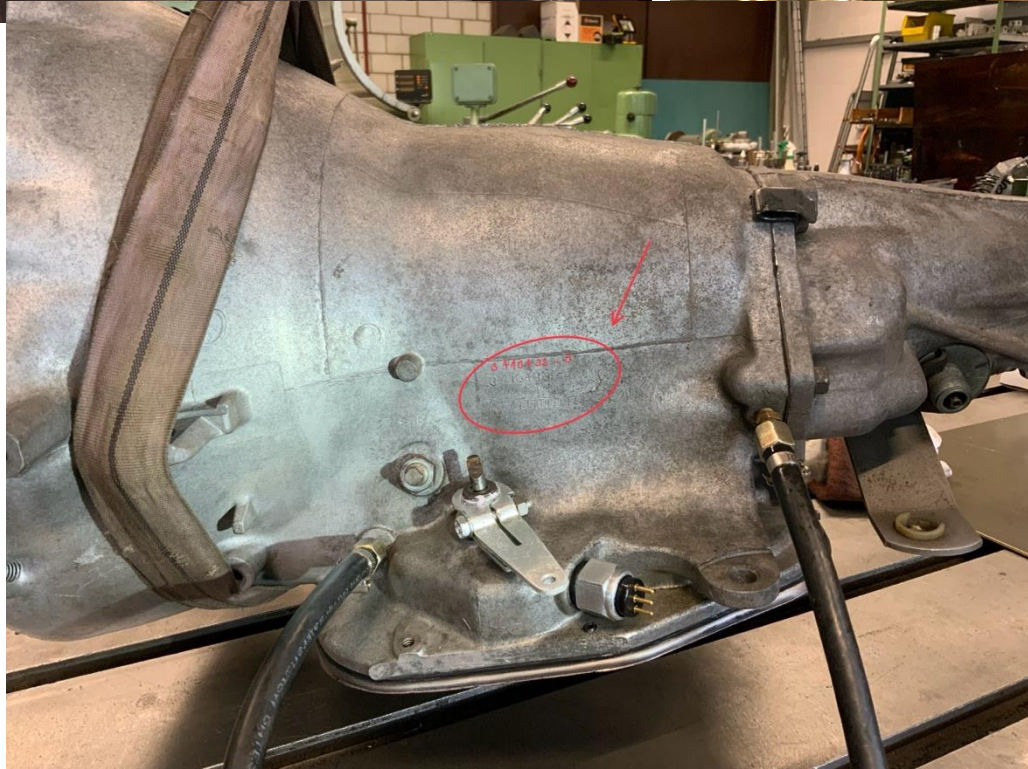
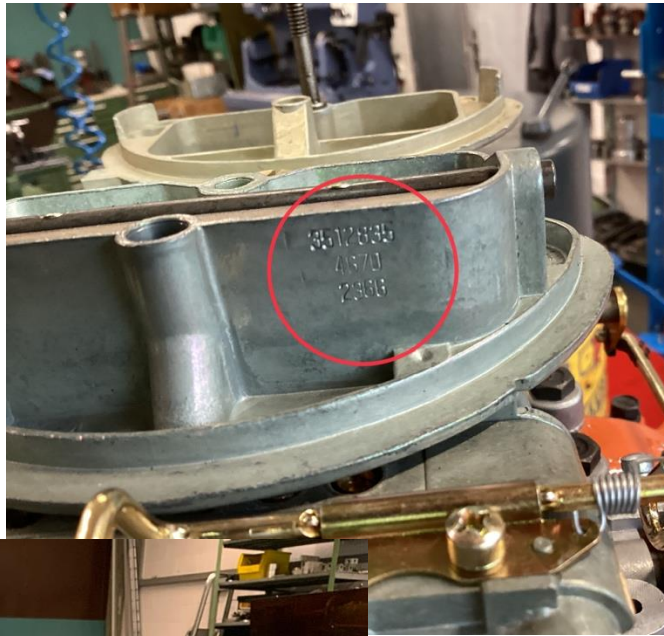
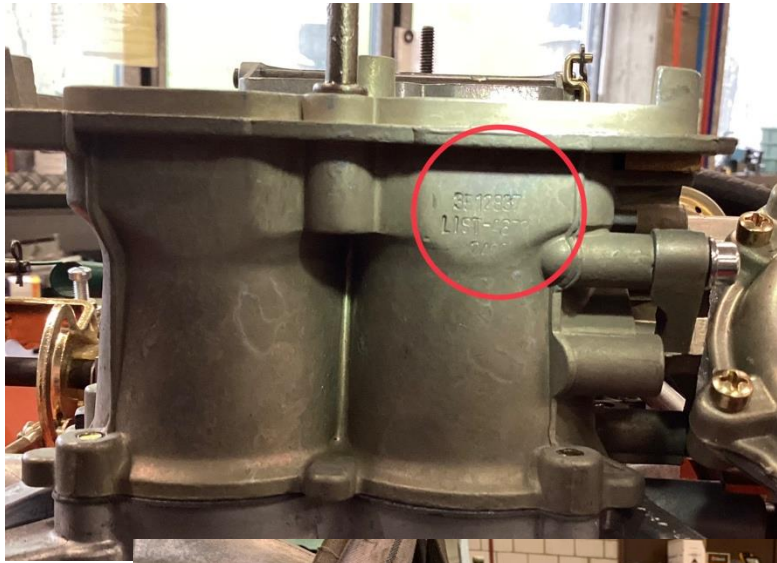








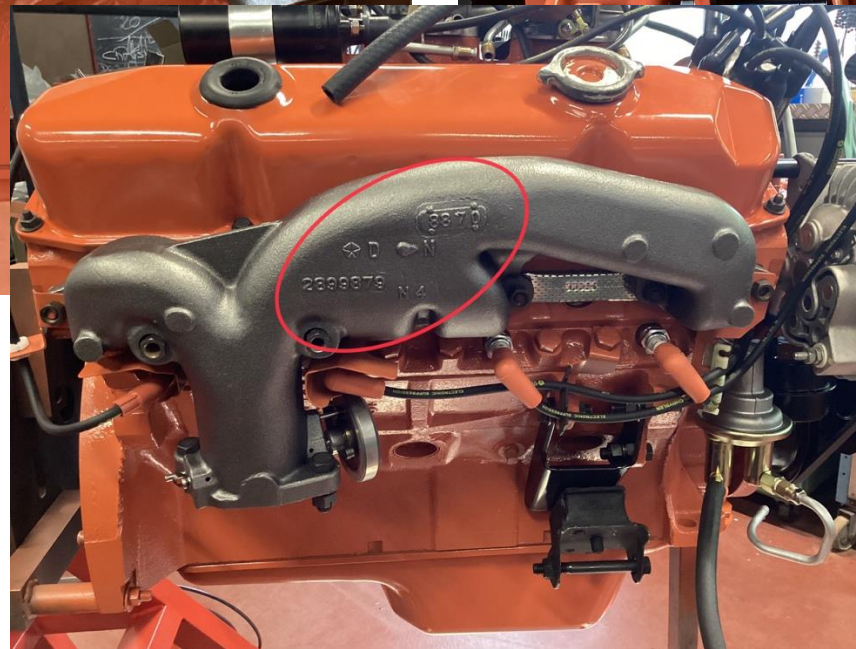
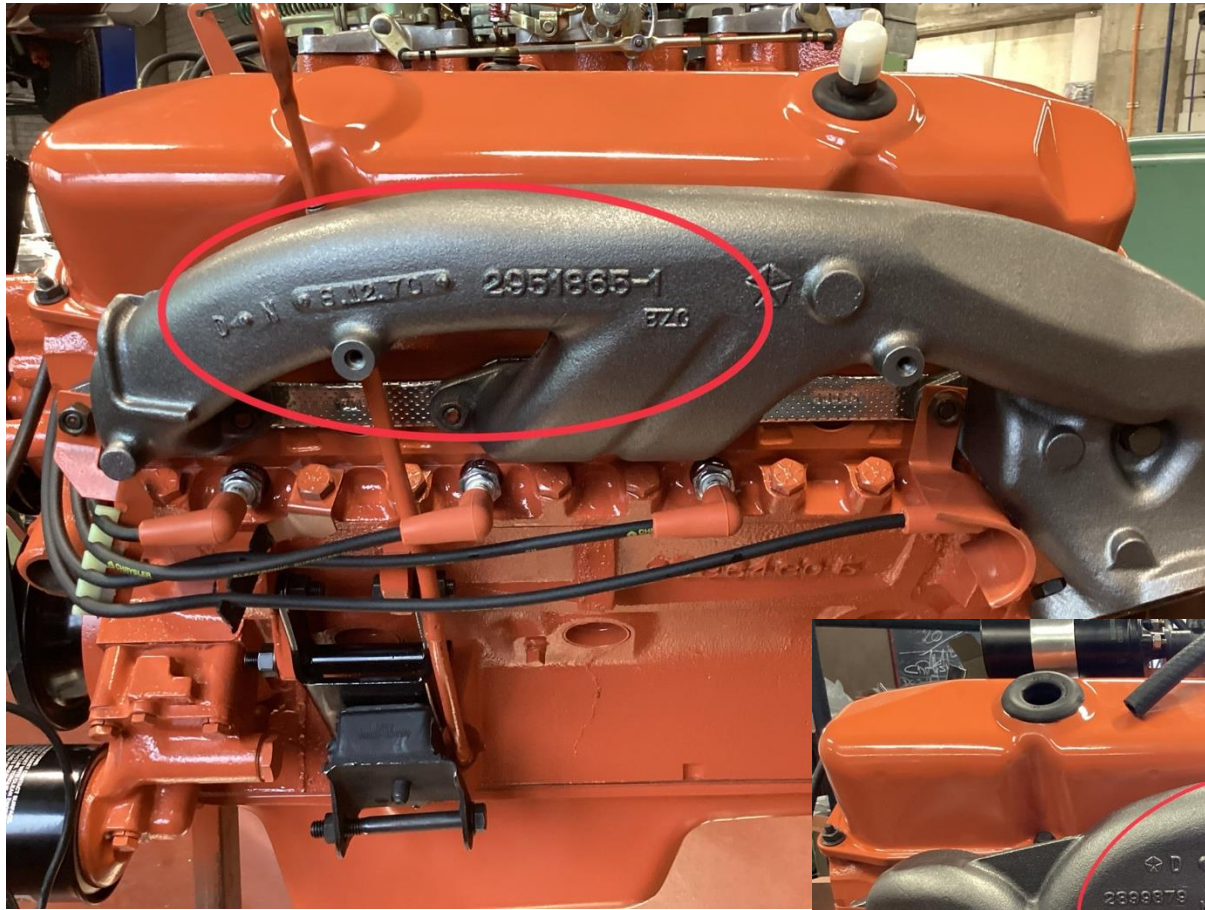








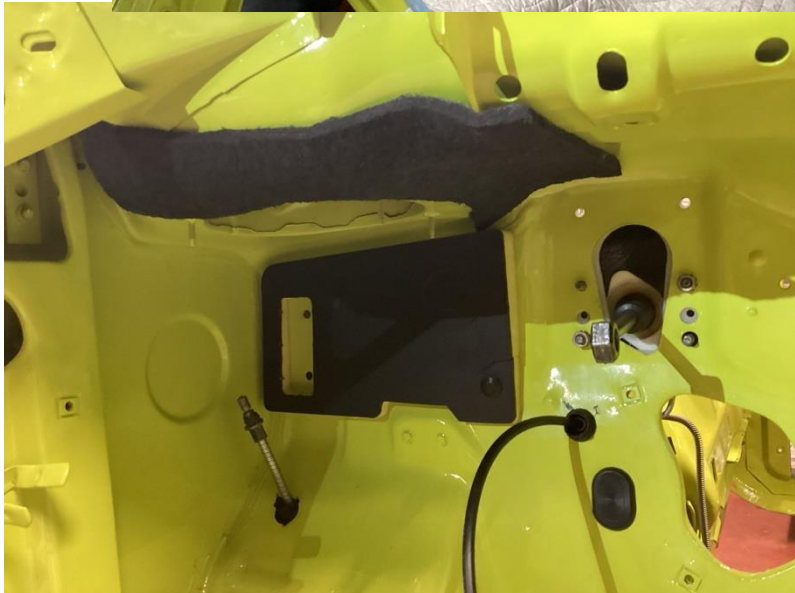




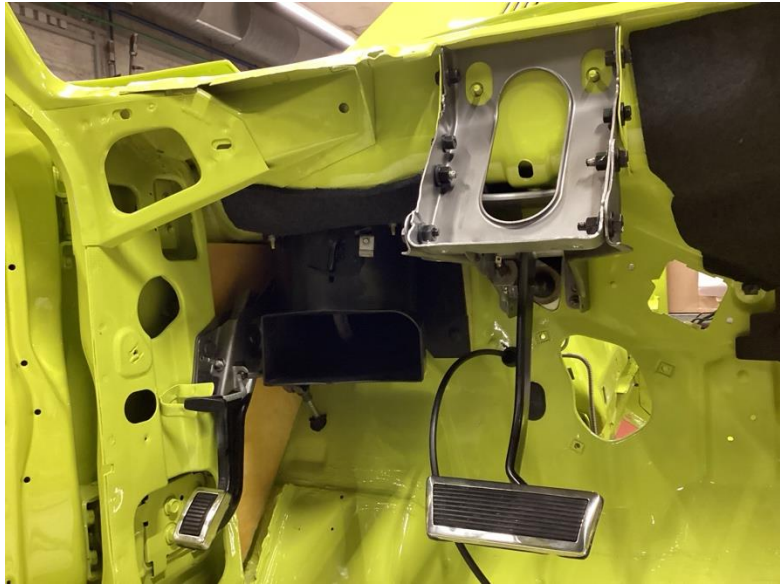








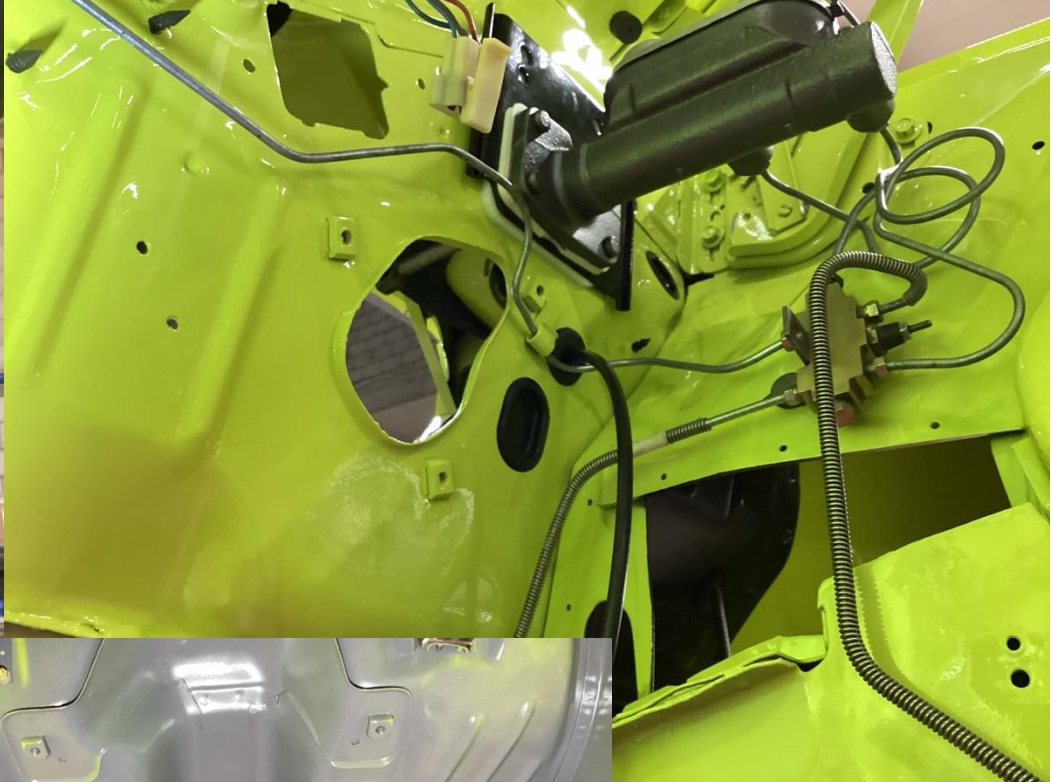




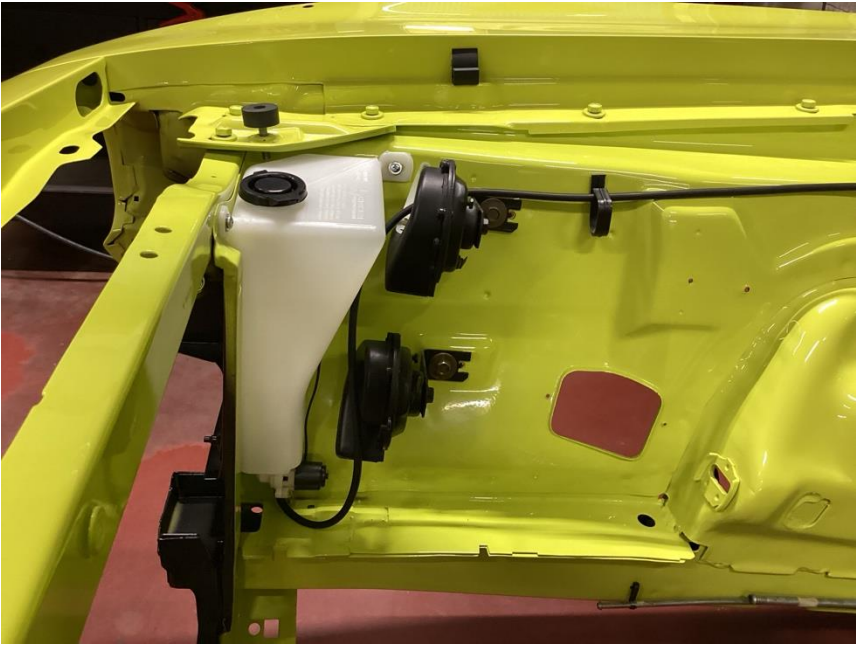






























# ***ENGINE V-CODE 440-6 BARREL***

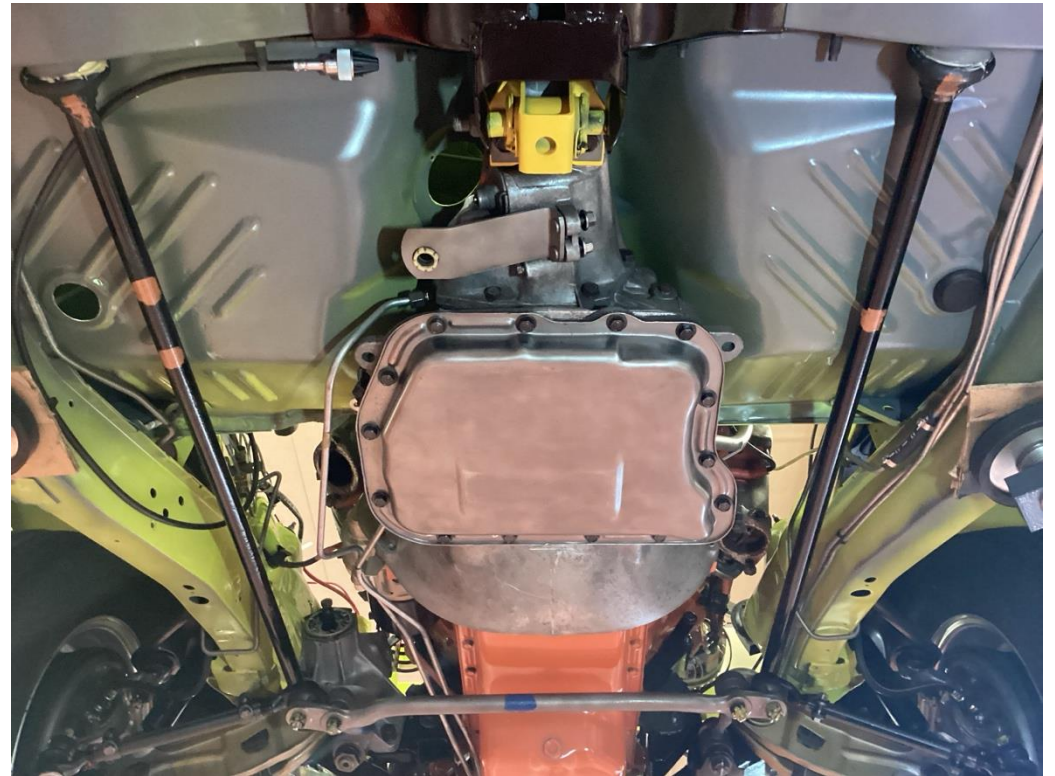




# WEDDING



# UNDERBODY





## REAR AXLE













# *Showroom Shooting*





# Shaker





# Rear Wing & Rally Wheels





# *Engine 440-6 Barrel V-CODE*





# *Interior Vinyl Bucket Seats*





*[www.top-auto-oerlikon](http://www.top-auto-oerlikon.ch)*

